

Location Map

NORTH



PROJECT LOCATION

NHOHO Historic District, Designed June 29, 1999

Historic District Map

# MARIA TASH | 653 BROADWAY STOREFRONT





Existing View of 653 Broadway

**MARIA TASH | 653 BROADWAY STOREFRONT**



June 15, 2018  
16005.00  
No Scale

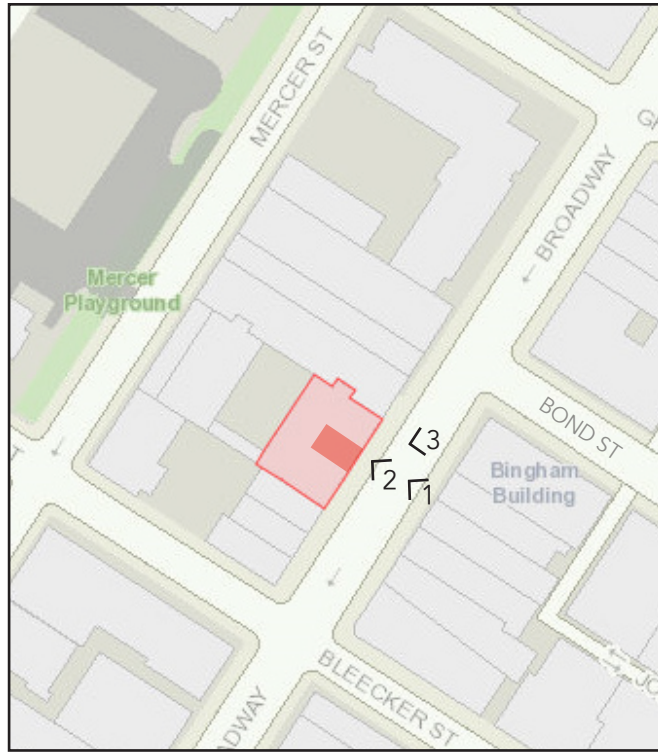




Proposed View of 653 Broadway

**MARIA TASH | 653 BROADWAY STOREFRONT**





Map



① Existing View of 653 Broadway



② Existing Close-Up View of 653 Broadway



③ Existing View of 653 Broadway Looking South

**MARIA TASH | 653 BROADWAY STOREFRONT**



June 15, 2018  
16005.00  
Scale: N.T.S





Both Sides of Broadway, 1910



Museum of the City of New York, 1975



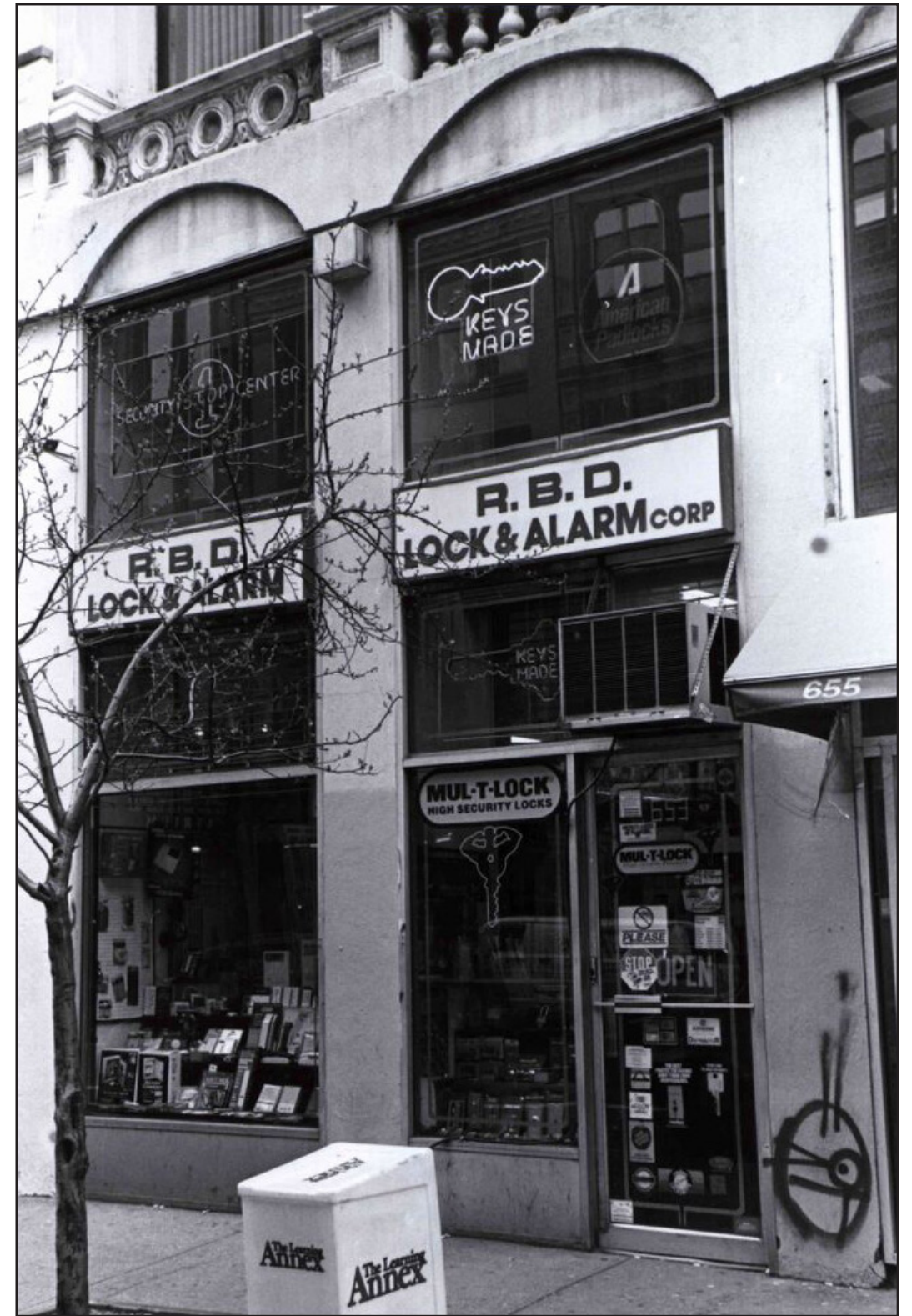
Allen Tannenbaum, 1979

**MARIA TASH | 653 BROADWAY STOREFRONT**





NYC LPC, c. 1999



NYC LPC, c. 1999

**MARIA TASH | 653 BROADWAY STOREFRONT**





1 Existing Overall East Elevation

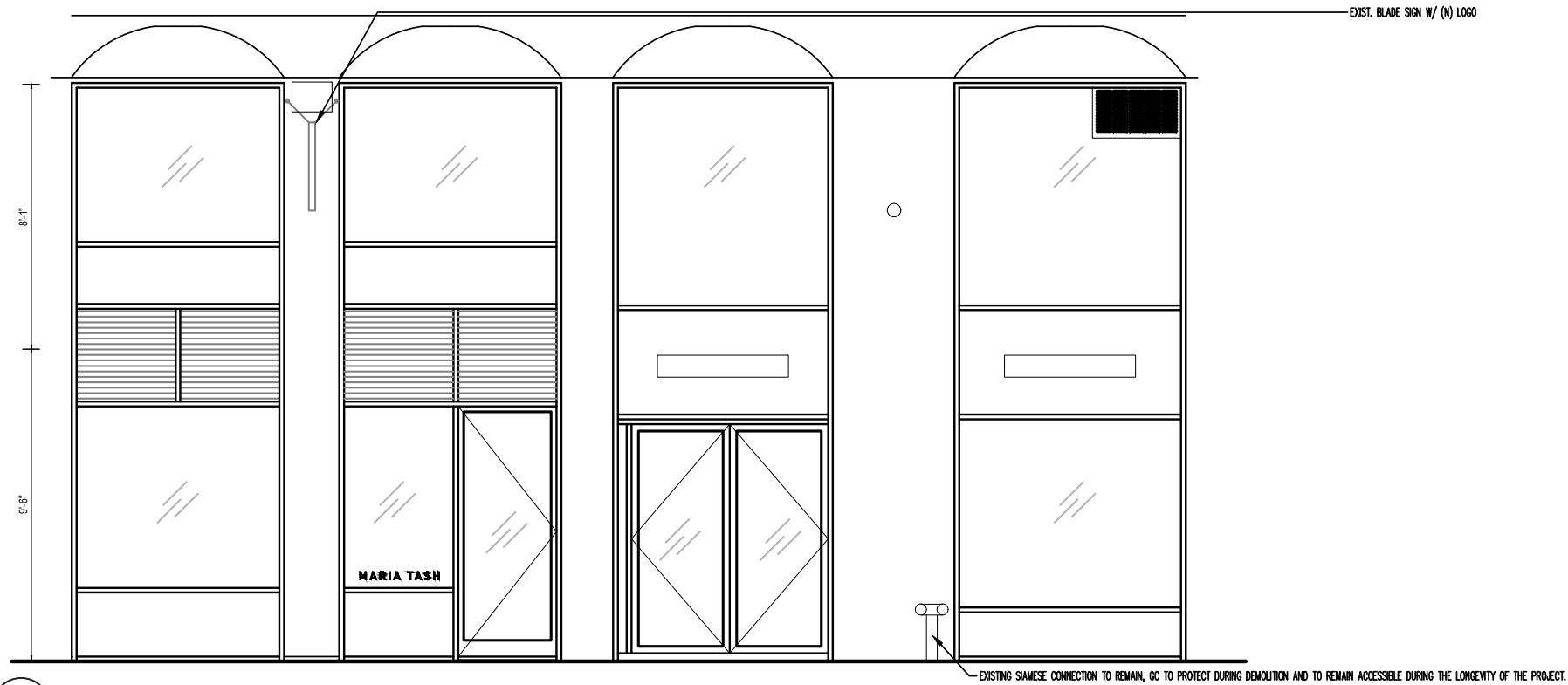
MARIA TASH | 653 BROADWAY STOREFRONT



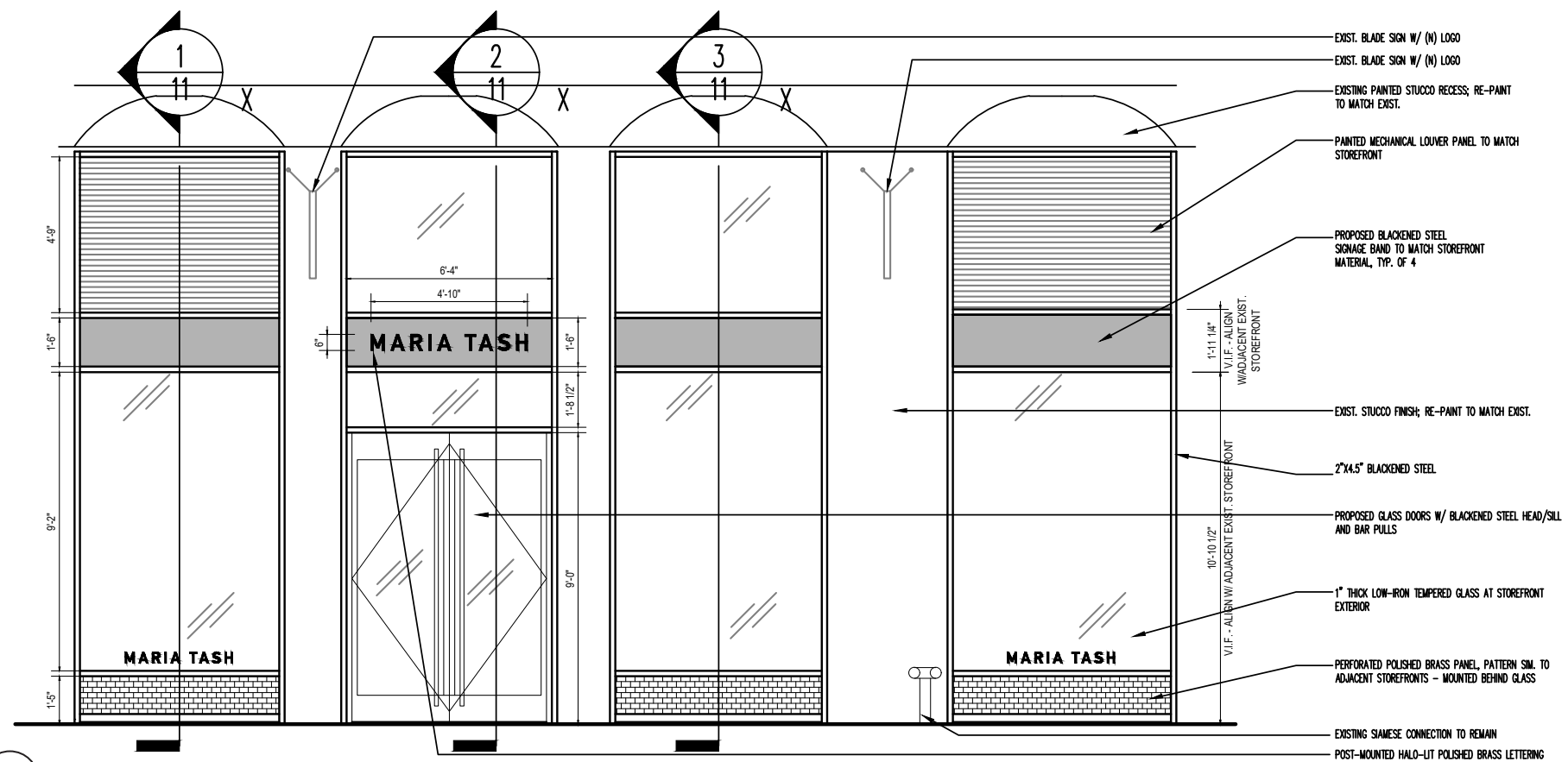


2 Proposed Overall East Elevation



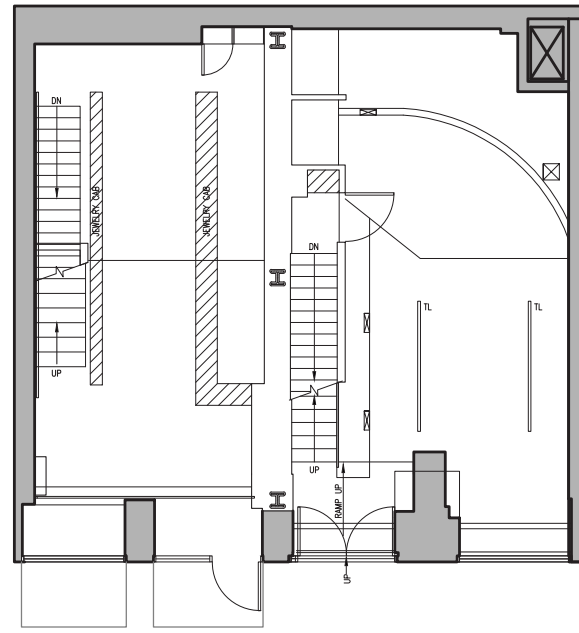


1 Existing Close-Up Storefront Elevation

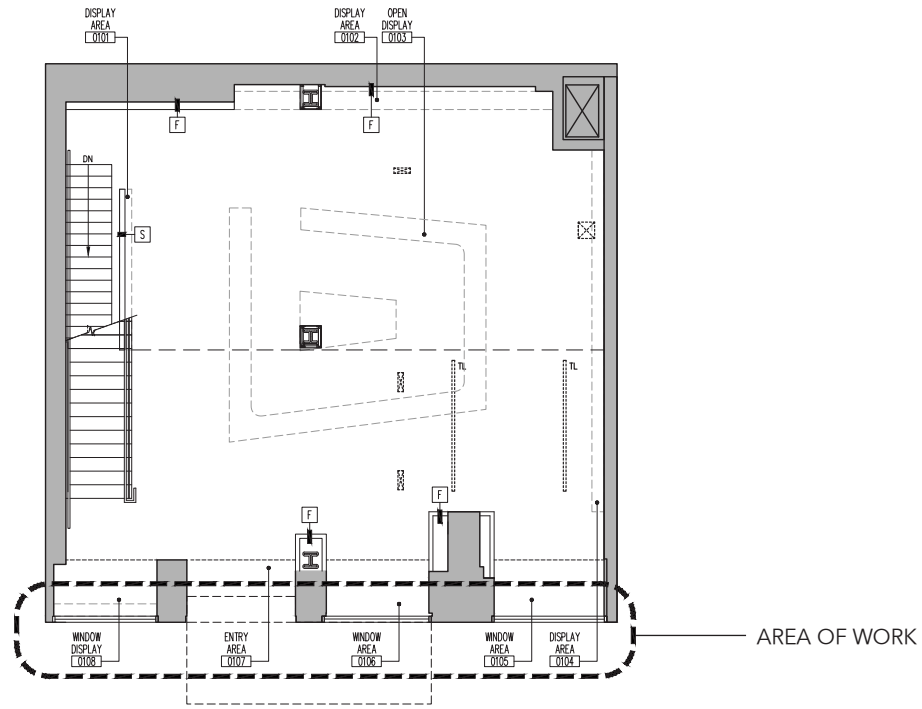


2 Proposed Close-Up Storefront Elevation

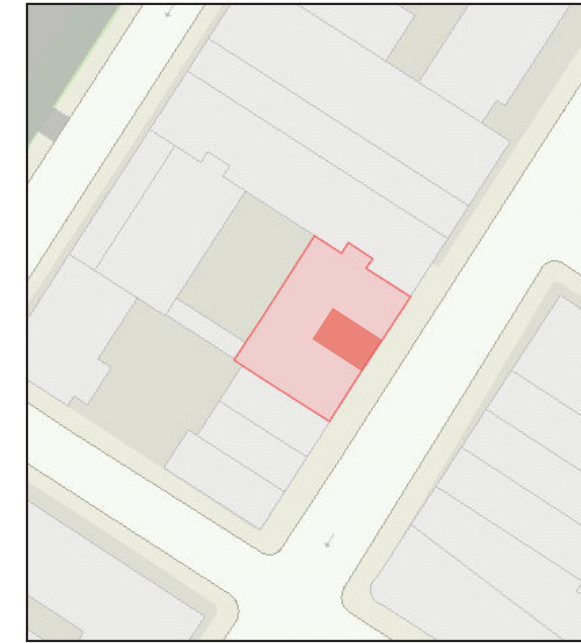




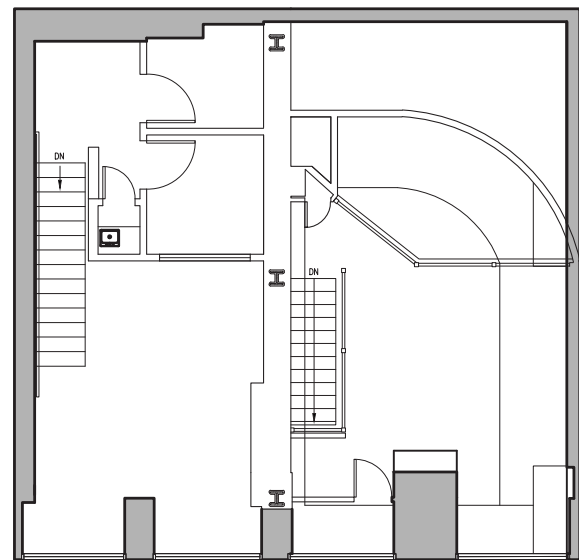
1 Existing Ground Floor Plan



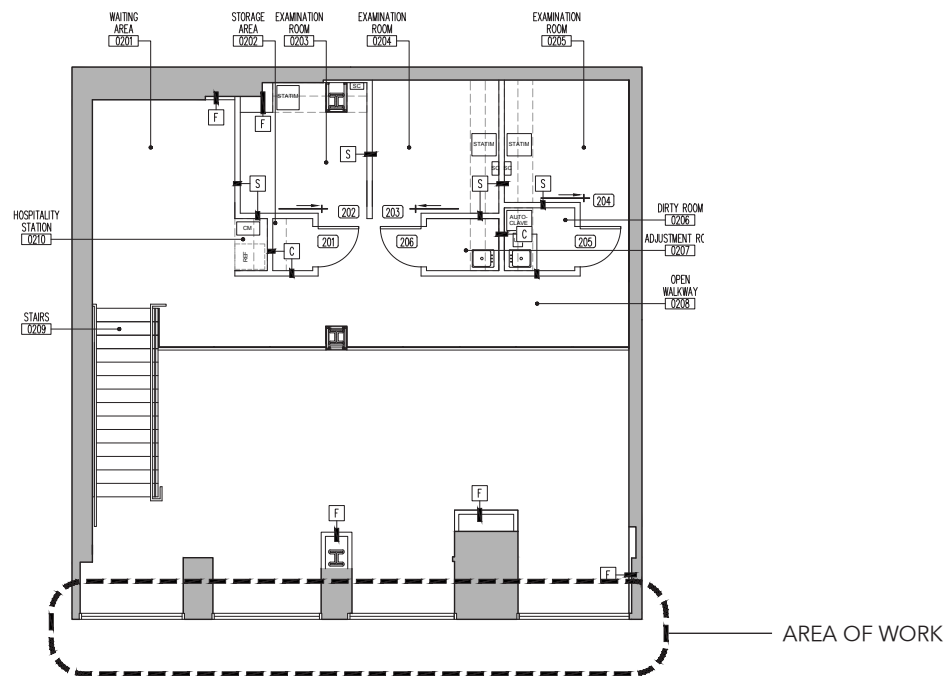
3 Proposed Ground Floor Plan



Store Location

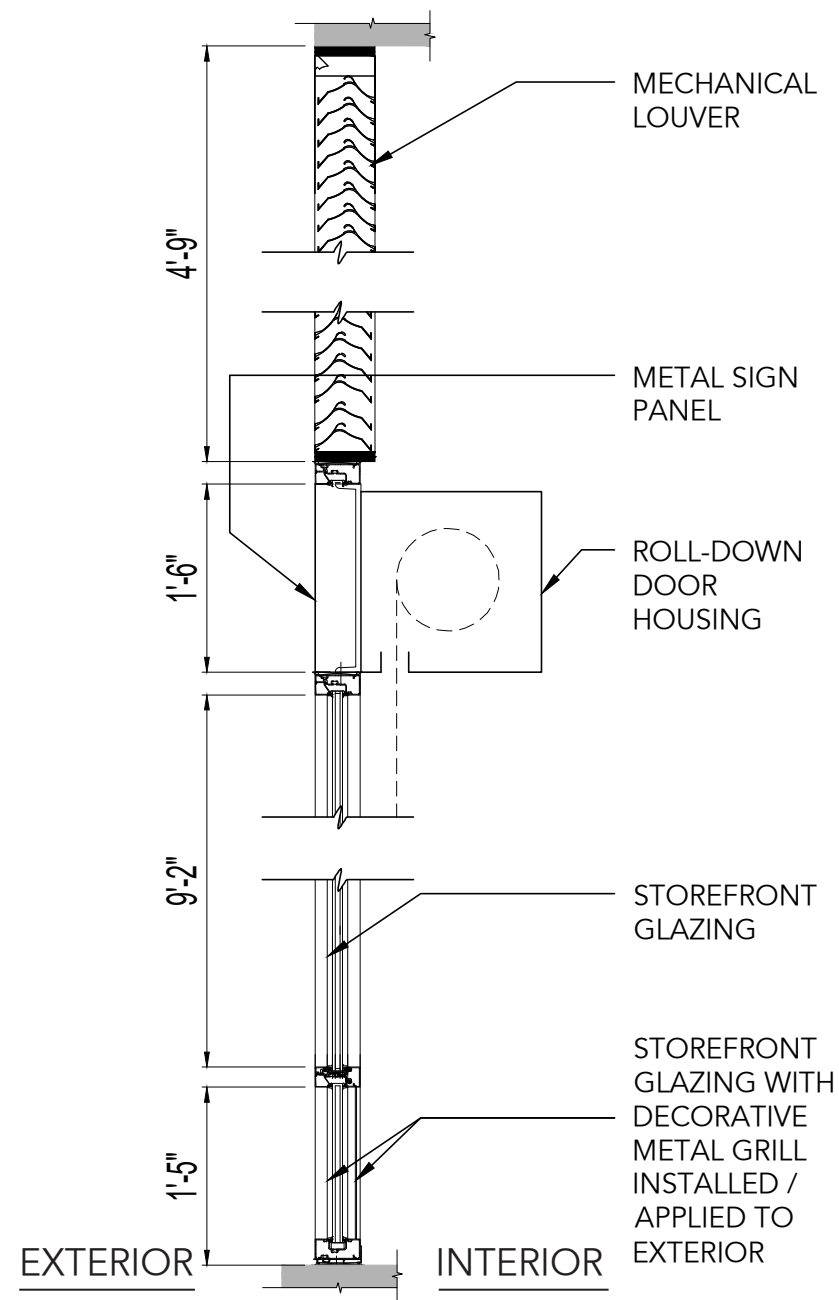


2 Existing Mezzanine Plan

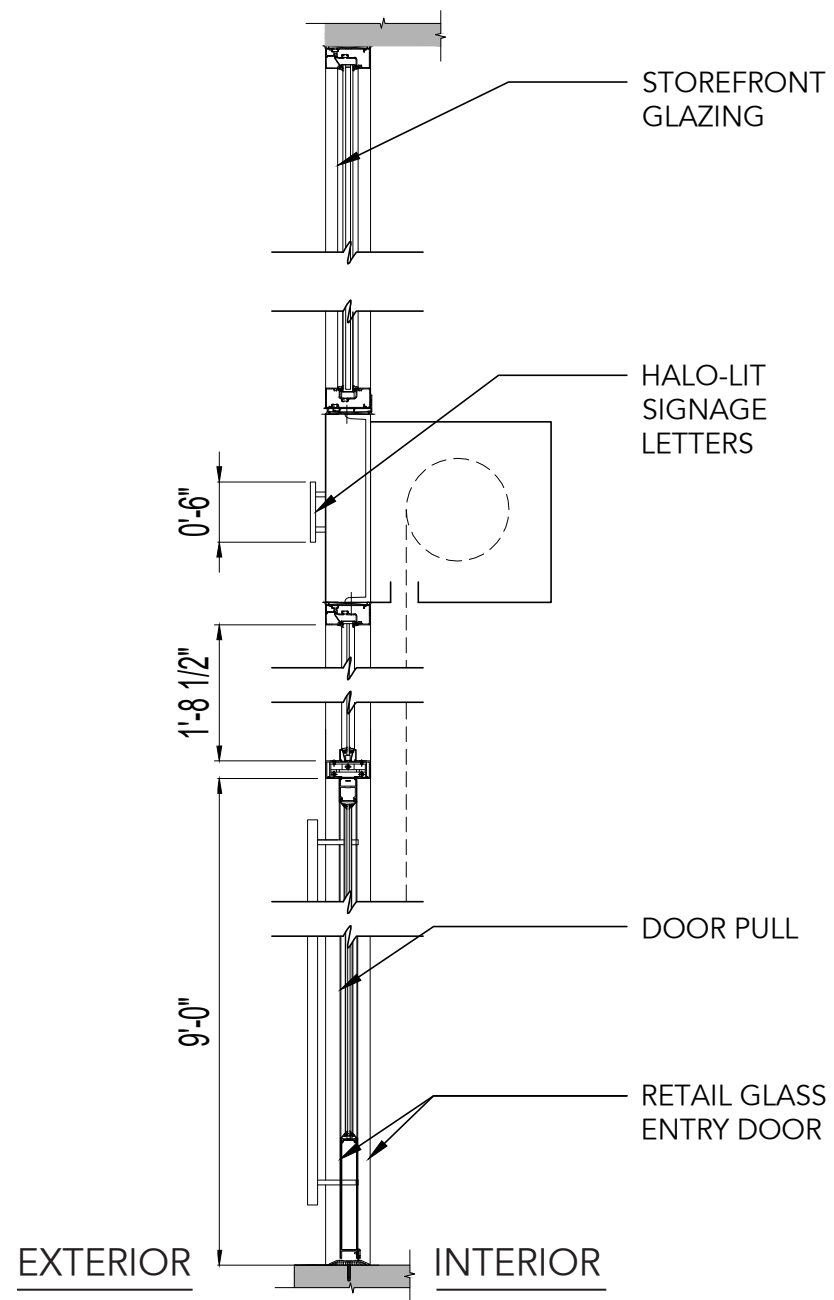


4 Proposed Mezzanine Plan

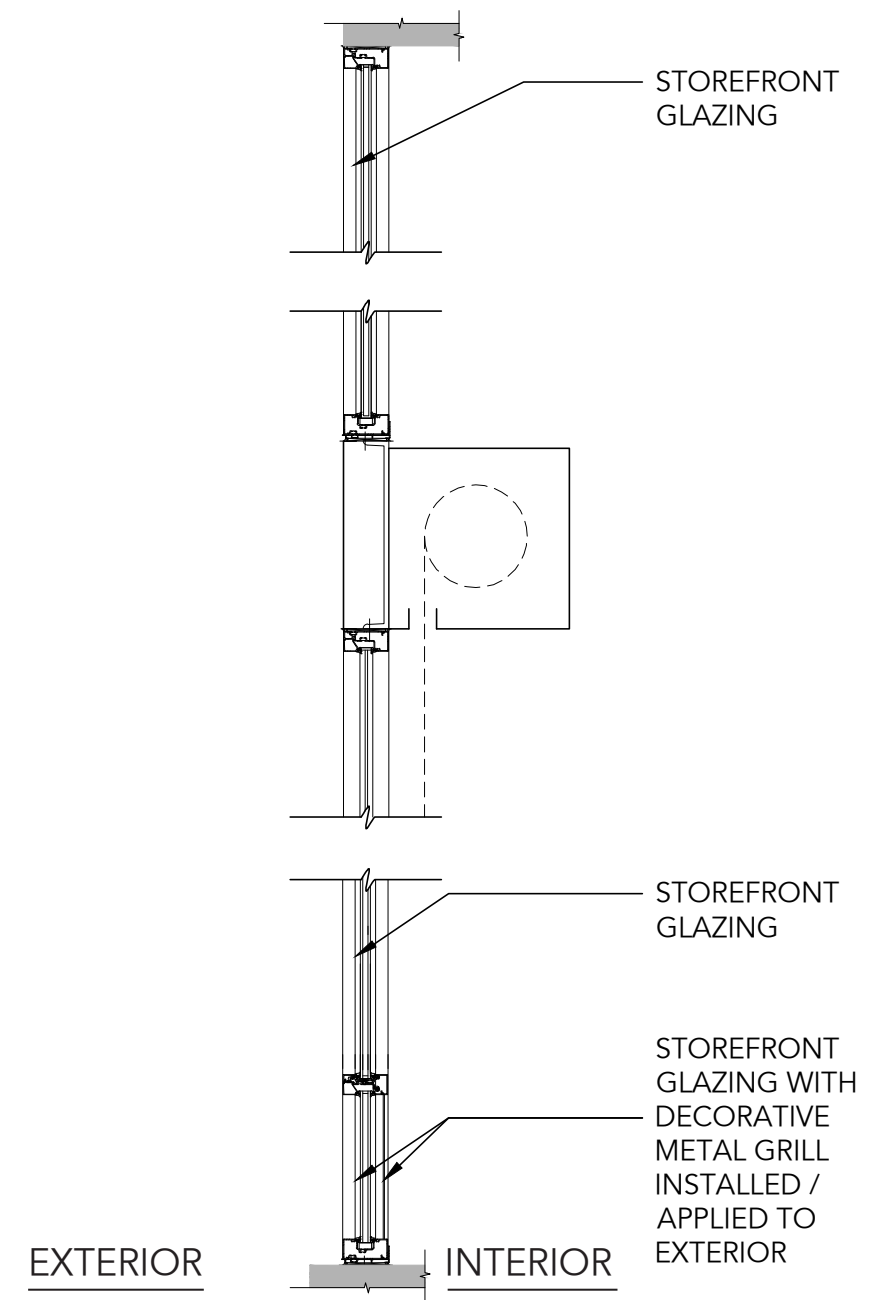




① Section- Storefront with Louver

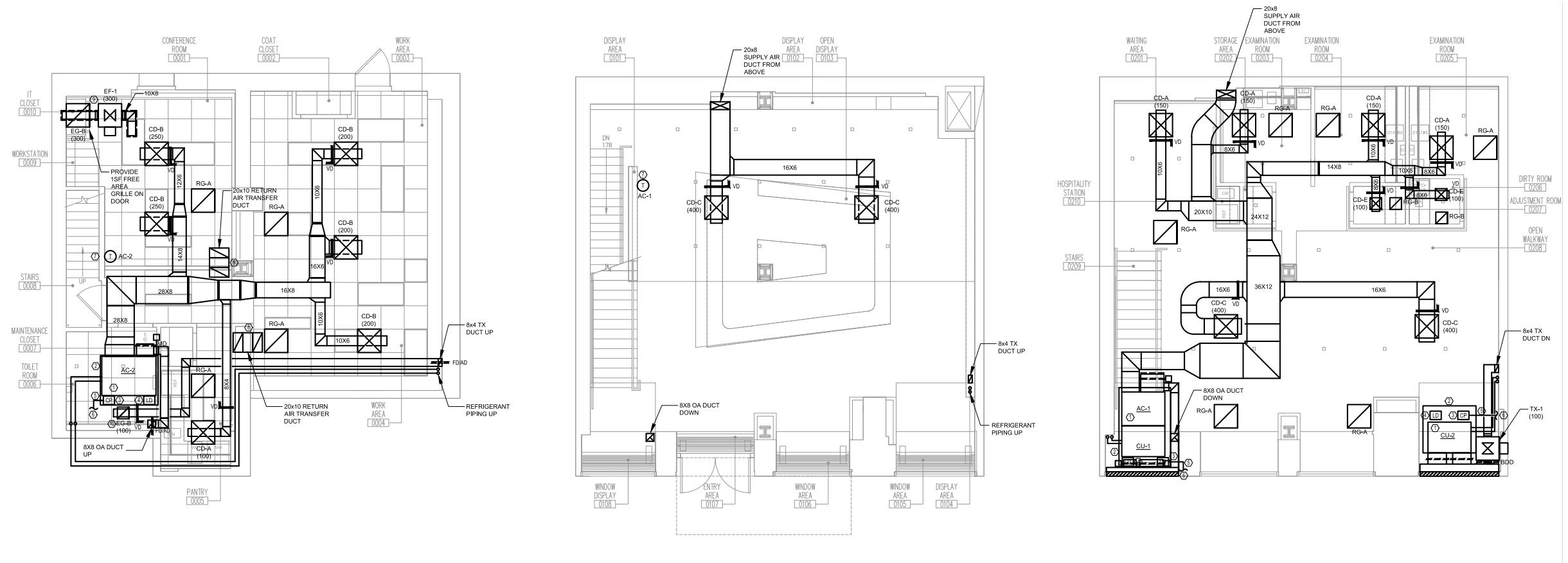


② Section- Storefront Entry



③ Section- Storefront Glazing





1 Mechanical Plans

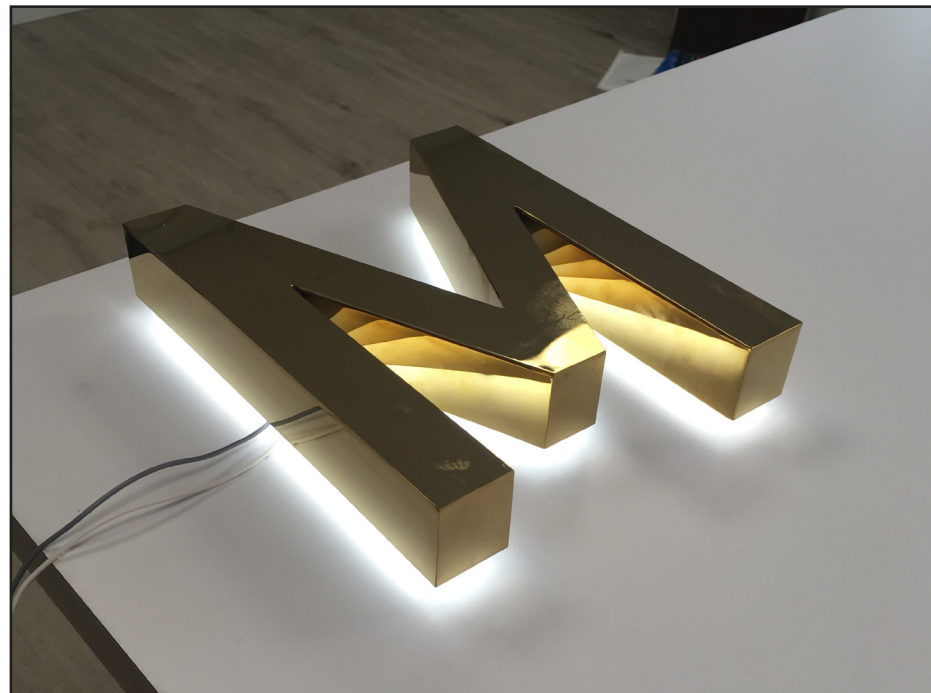




Proposed Blackened Steel



Proposed Polished Brass



Proposed Back Channel Lit Lighting Example